



610 SPRINGFIELD AVENUE  
SUMMIT, NEW JERSEY

**CHRISTIE'S**  
INTERNATIONAL REAL ESTATE  
NORTHERN NEW JERSEY



**Carolann Clynes, CRB**  
Broker/Sales Associate  
carolann@njfinehome.com  
908-400-7000  
www.njfinehome.com

Christie's International Real Estate Northern New Jersey | 47 Maple Street | Summit, NJ 07901 | 908-516-4790





Architectural gem where character meets modern convenience - all within blocks of downtown Summit and Mid-town Direct train to Manhattan. Private/fenced and flat backyard with circular driveway off High St. Large-scale rooms with high ceilings & striking architectural details. Impressive wood flooring & Victorian woodwork. Open wrap-around front porch is the piece de resistance! This spacious Grand Dame offers lifestyle, convenient location & today's updates. A gracious Foyer greets you leading to Family Room, Living Room, formal Dining Room, eat-in Kitchen with back staircase, Laundry Room, Powder Room, Enclosed Porch with stained glass windows & rear outside Entrance. Four Bedrooms all on second floor with two full Baths & Office; two Bedrooms on 3rd floor along with Office and full Bath. Master bedroom has large Dressing Room, great closet space & modern Bath.

Updated systems: insulation throughout, ductless heat/AC units 3rd floor, tankless HWH, new storm doors/plantings & fencing/gutters, electric wiring brought up to code, updated windows, interior painting throughout & front Porch.





I D E A L   L O C A T I O N



# HIGHLIGHTS

## Interior

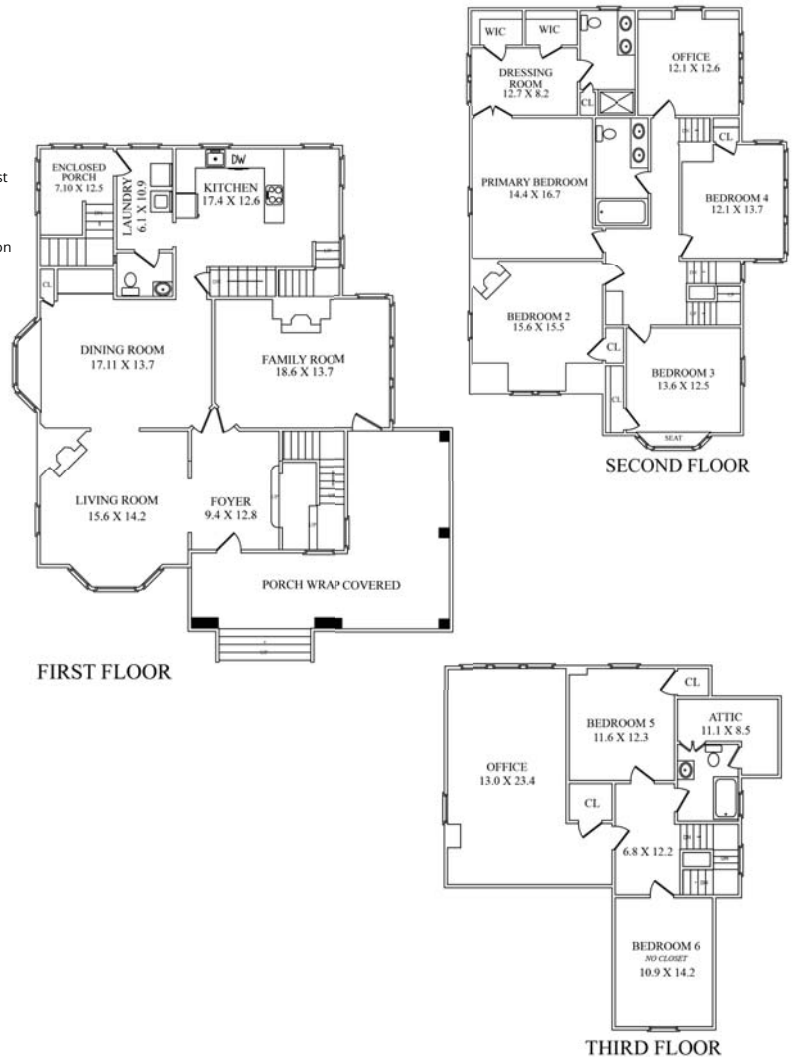
- Beautifully finished across 3 levels with comfortable bedrooms and leisure space
- Unfinished, walkout basement with open storage capacity and the potential for finishing
- Interior features include high ceilings, hardwood floors, Victorian woodwork, stained glass windows, built-ins, and bay windows
- Eat-in kitchen with wood cabinets, granite counters, stainless steel appliances, and separate breakfast area
- Primary bedroom with dressing room and en suite bath
- Laundry room and powder room on first floor; Home office on second floor; Additional home office on third floor
- Central air conditioning and heating; Ductless heating and cooling on third floor
- Security system
- Tankless hot water heater
- Thermal windows

## Exterior

- Partial stone exterior with low-maintenance vinyl siding
- Covered, wraparound front porch
- Paved, circular driveway with parking
- Fenced backyard
- Preferred Summit neighborhood close to Brayton School, shopping, and transportation to NYC Penn Station
- Easy access to major highways, business centers, and Newark Liberty International Airport - just 20 minutes away

## Particulars

- Victorian
- 6 bedrooms, 3 full bathrooms, 1 half bathroom
- Built: 1906 / Renovated: 2016
- Lot size: 0.3 acres



Copyright© 2003 Visual Marketing & Design. Information is deemed reliable but should be independently verified for accuracy. Real Estate Broker and agents acting on their behalf for the purpose of creating the brochure are not responsible for typographical errors, misprints or misrepresentations and are therefore held totally harmless. The floor plan is provided for illustration purposes only and not to scale.